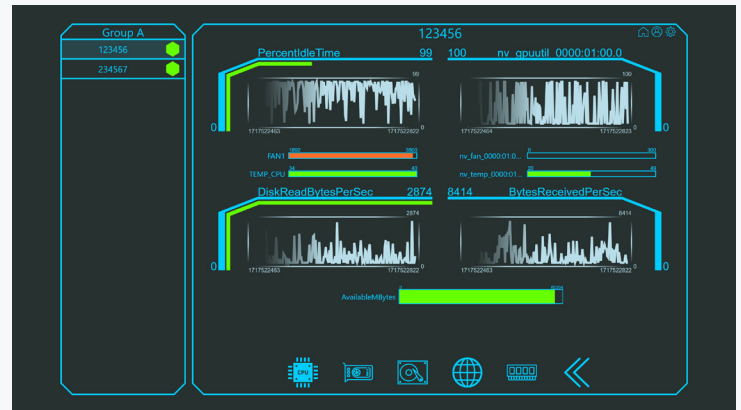


# DCAssure™ - Health Monitoring

DCAssure™ is a health monitoring service that runs on Windows and Linux-based DC hardware. It collects health data of hardware and operating systems, displaying this information in an easy-to-understand graphical web interface. DCAssure™ is typically used to determine the readiness of simulators, ensuring all computers operate within user-set limits before training starts. Its logging feature allows for after-action reviews, reducing the time needed for support teams to restore simulator operational readiness.

## Highlights

- Enhanced Operational Efficiency
- Proactive Maintenance
- Easy-to-Use Interface
- Comprehensive Health



**Platform:**  
Windows  
& Linux



**Monitoring:**  
Real-time health  
data collection



**Interface:**  
Graphical  
web interface



**Use Case:**  
Simulator readiness  
assessment



**Logging:**  
Detailed after-  
action review logs

